

STATION 1

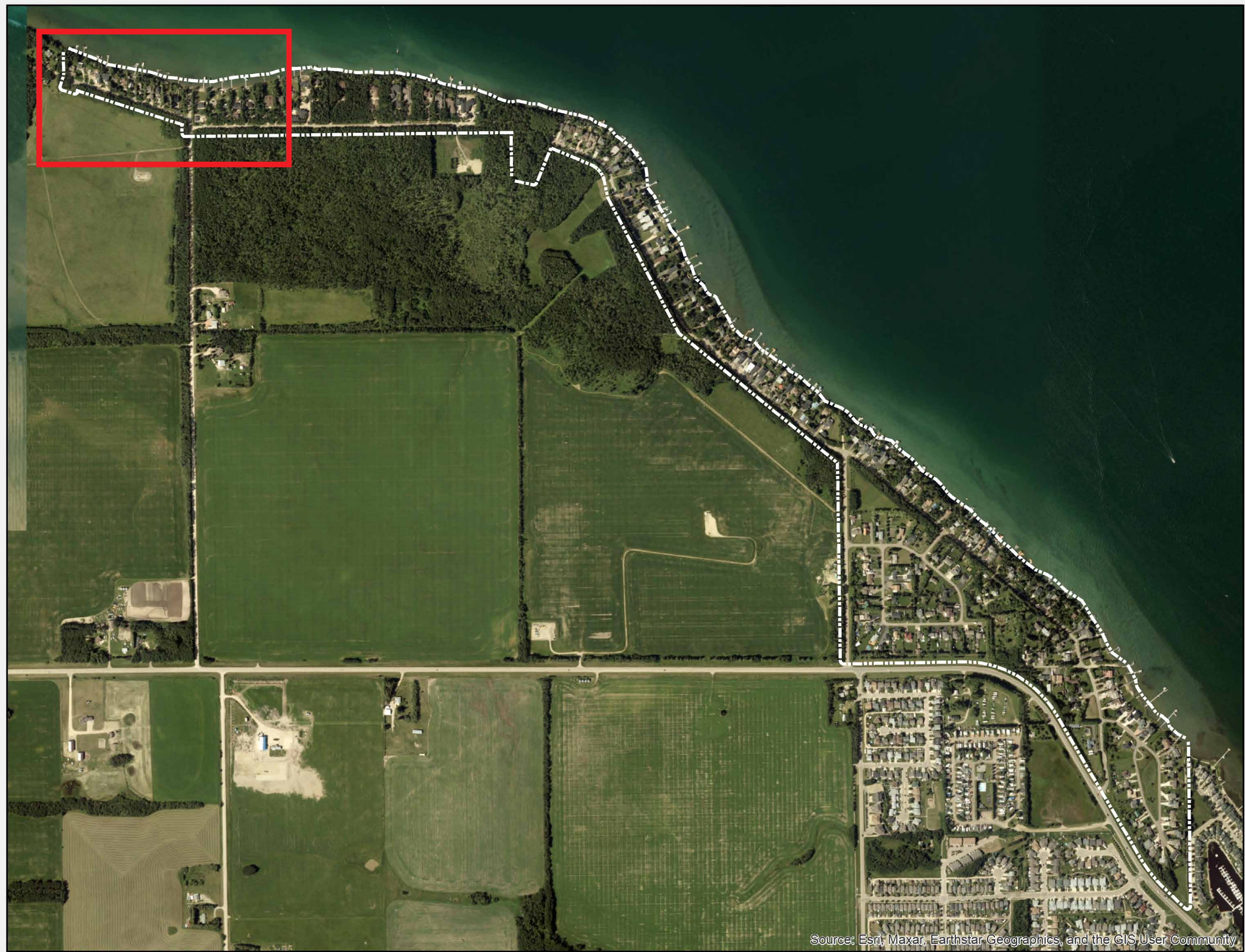
Last Chance Way/Range Road 20



OS1 - Shoreline, looking west



OS1 - Shoreline, looking west



OS2 - Range Road 20, looking north



OS2 - Range Road 20, looking south



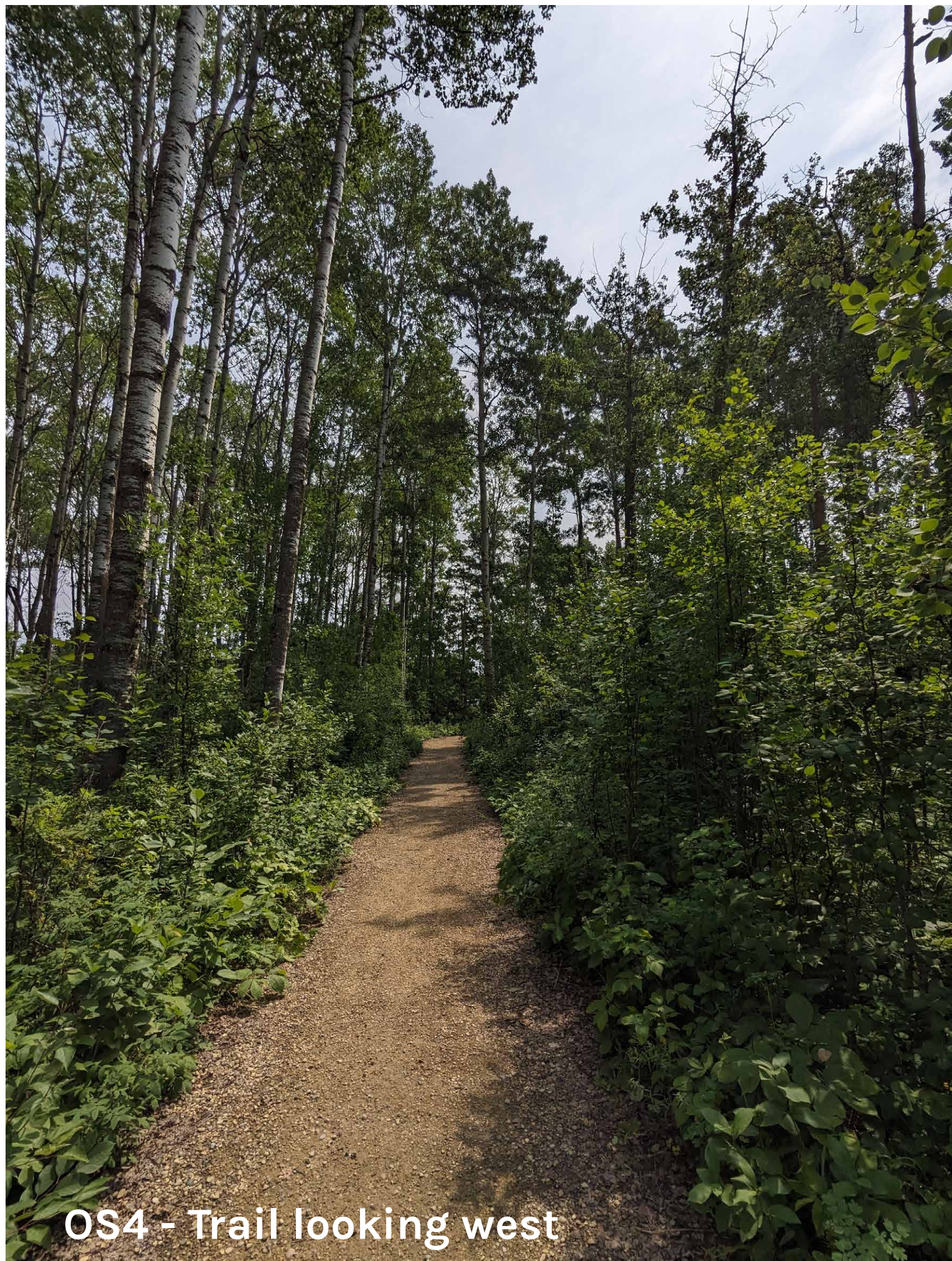
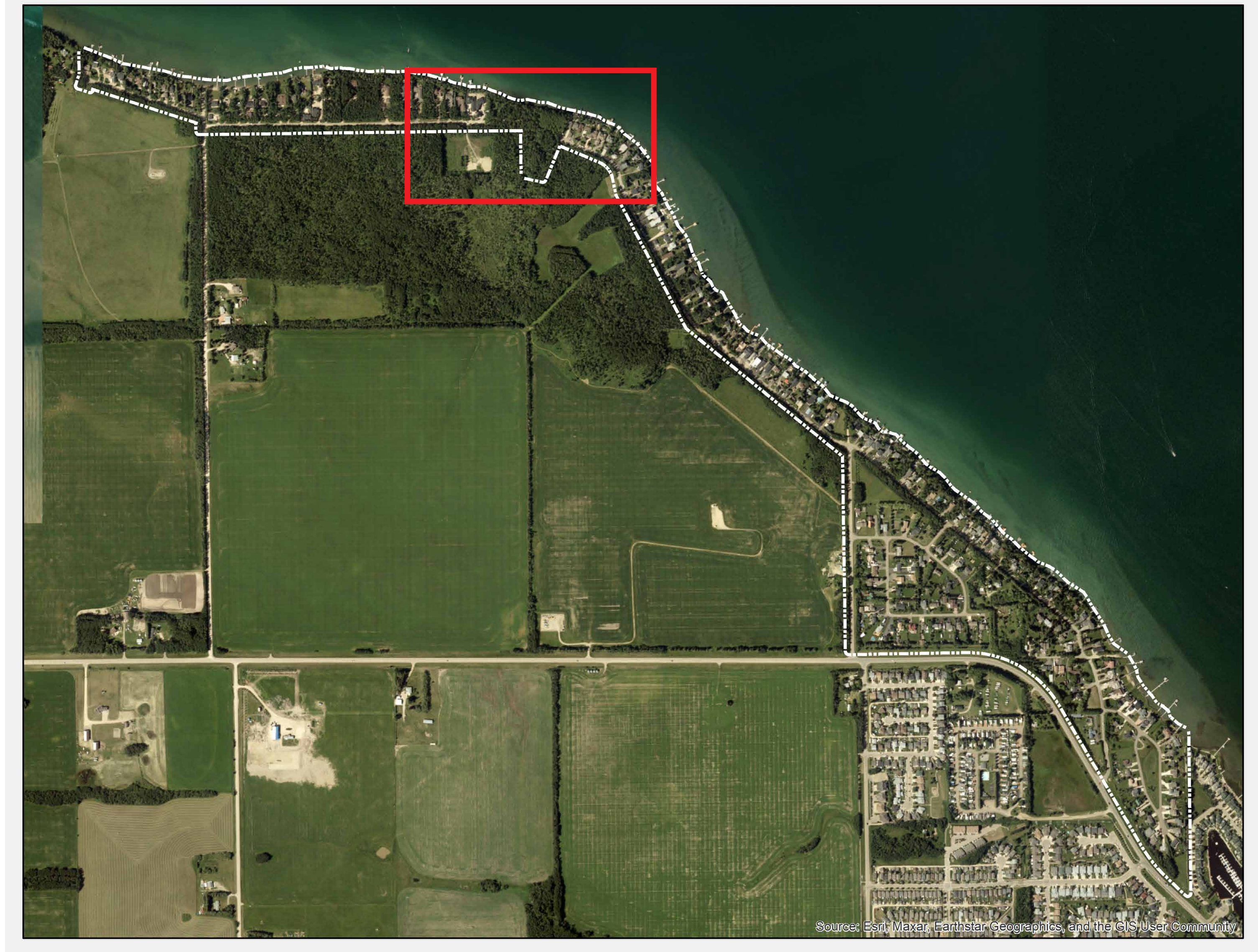
OS3 - Looking north from road



OS3 - Shoreline, looking east

STATION 2

Chipmunk Park



STATION 3

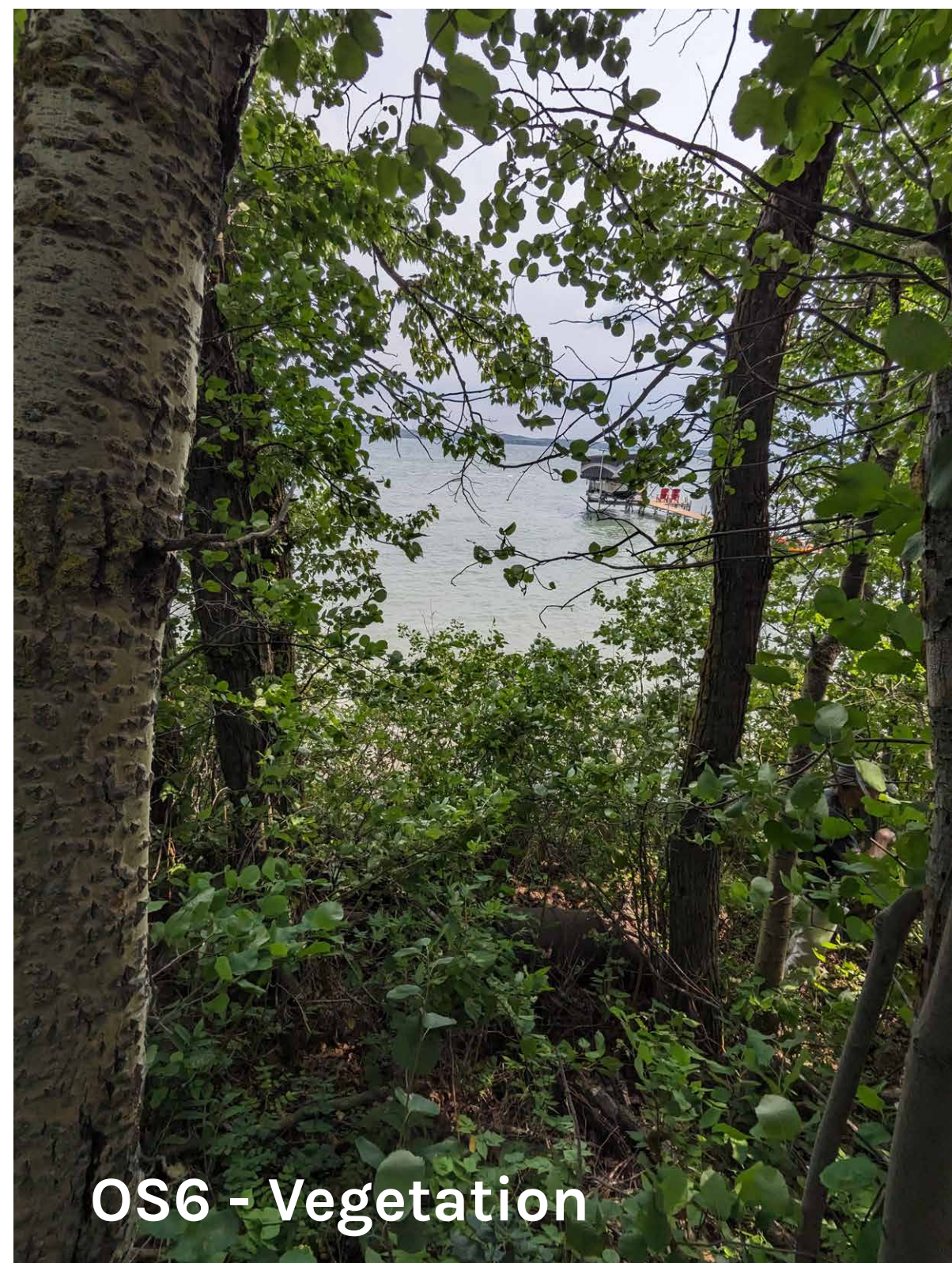
North Grand Ave



OS5 - Looking north



OS5 - Vegetation



OS6 - Vegetation



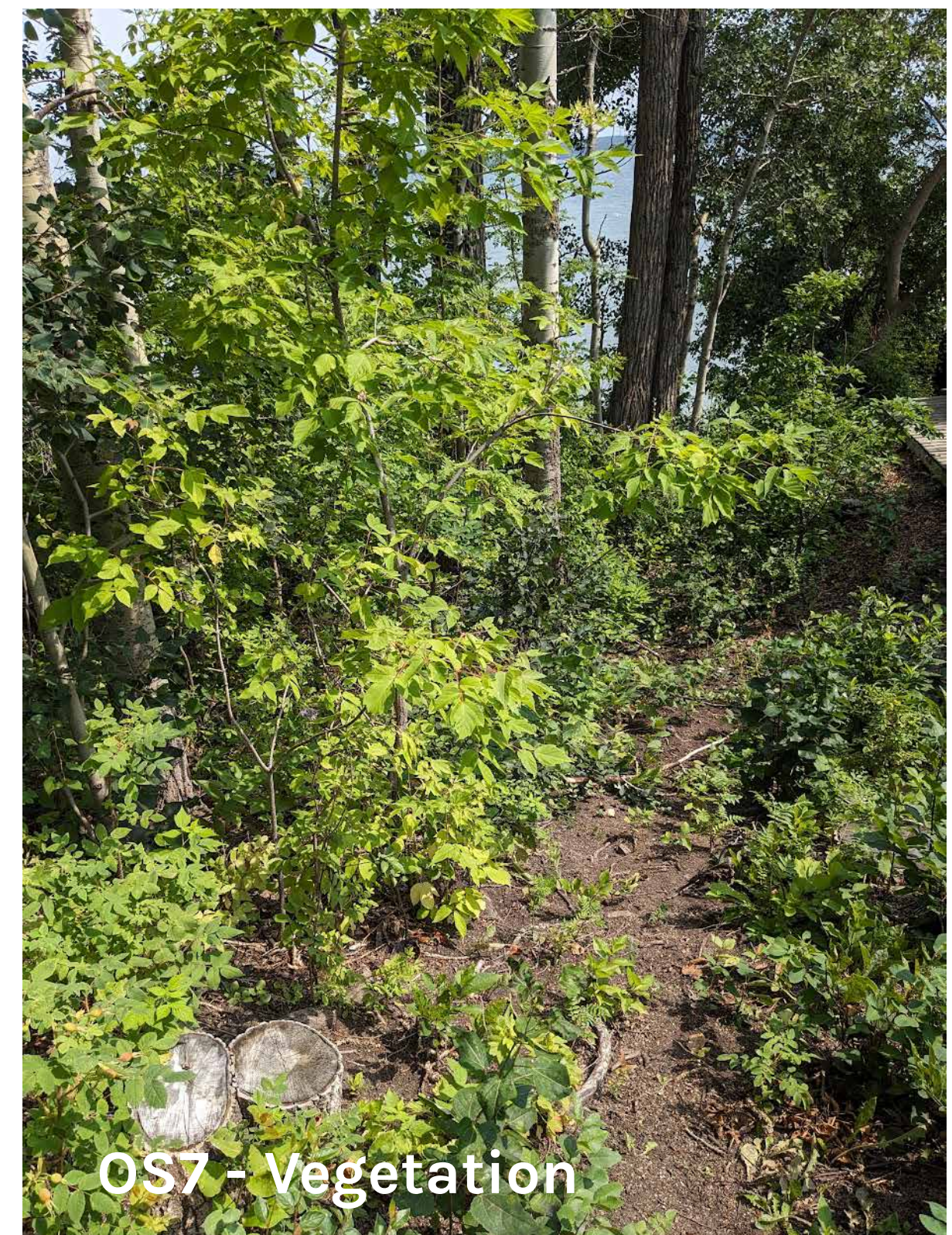
OS6 - Looking north



OS7 - Drainage course



OS7 - Shoreline



OS7 - Vegetation

STATION 4

Summer Village Owned Land in County/Grand Ave



STATION 5

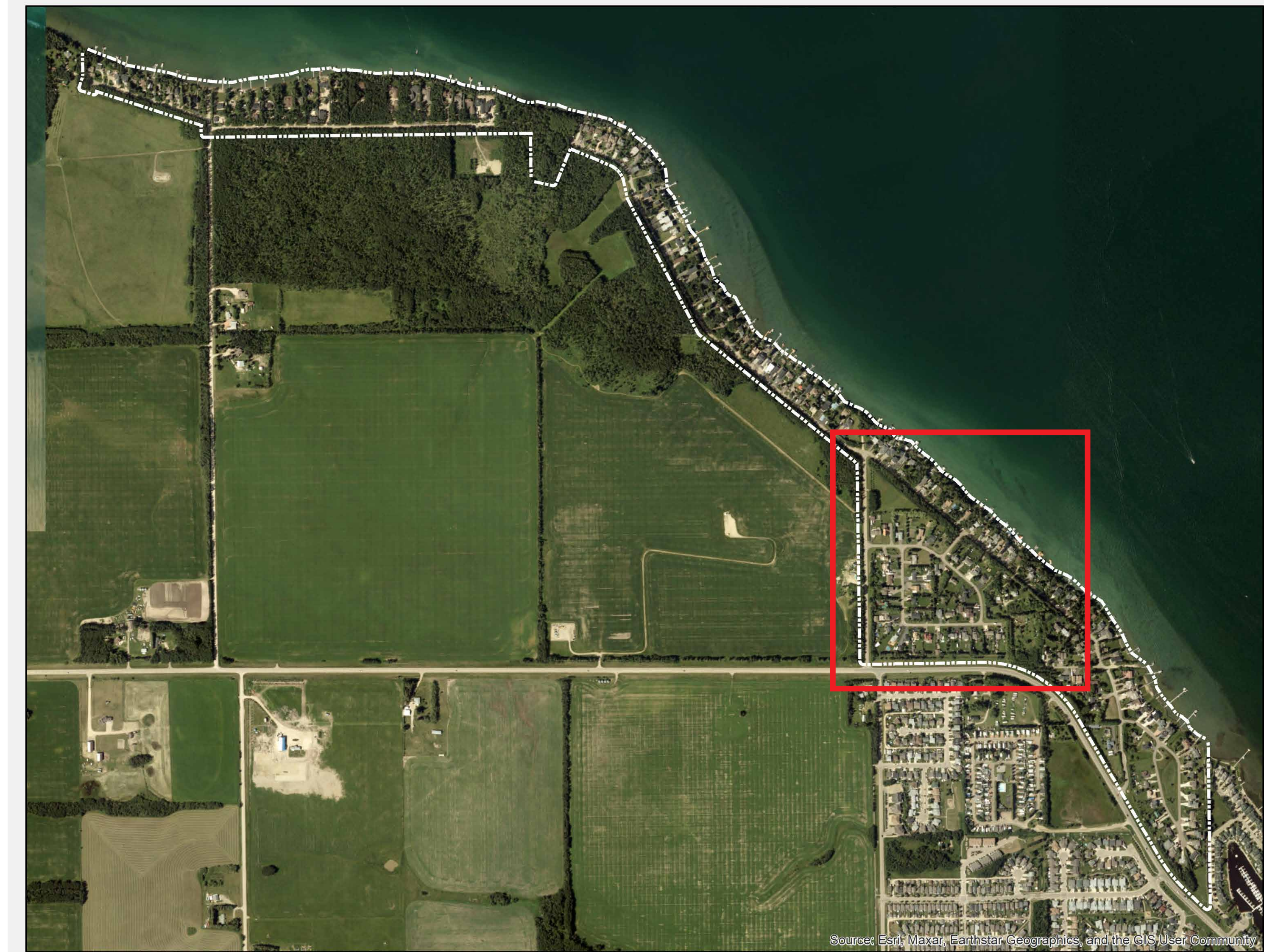
Ravenscrag Crescent/Grand Ave



OS11 - Looking southeast



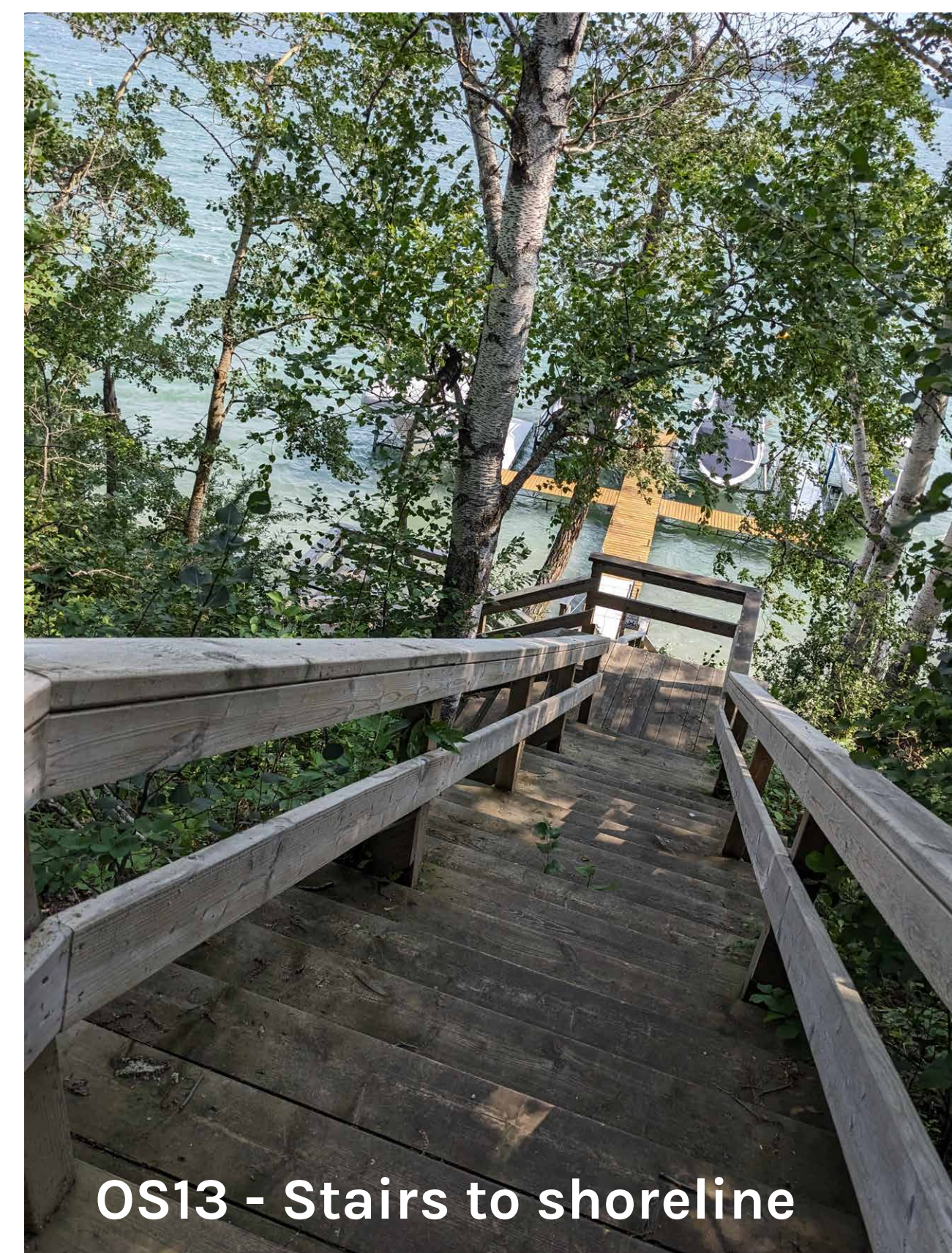
OS11 - Drainage corridor, looking north



Source: Esri, Maxar, Earthstar Geographics, and the GIS User Community



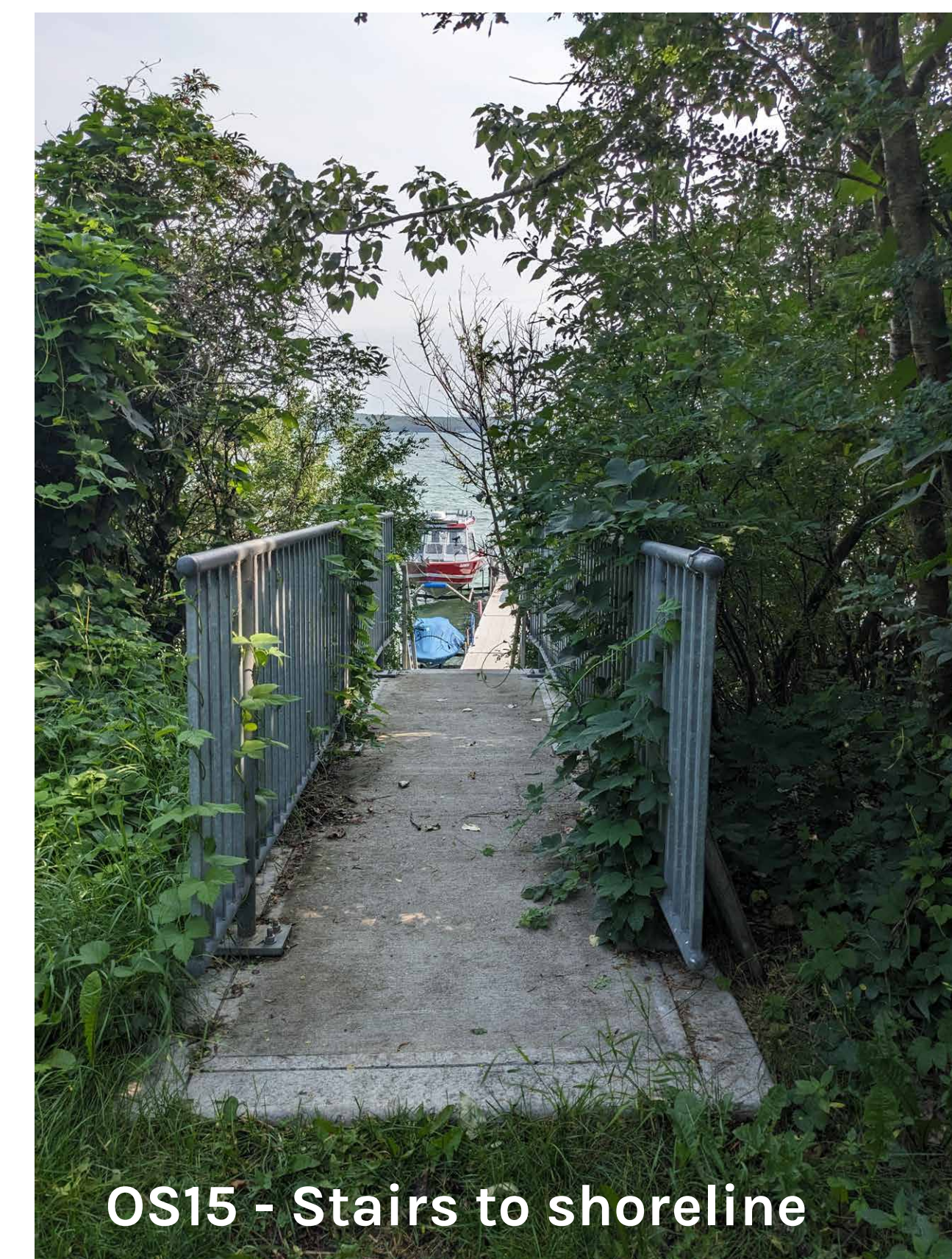
OS12 - Vegetation



OS13 - Stairs to shoreline



OS14 - Stairs to shoreline



OS15 - Stairs to shoreline



OS18 - Looking west

STATION 6

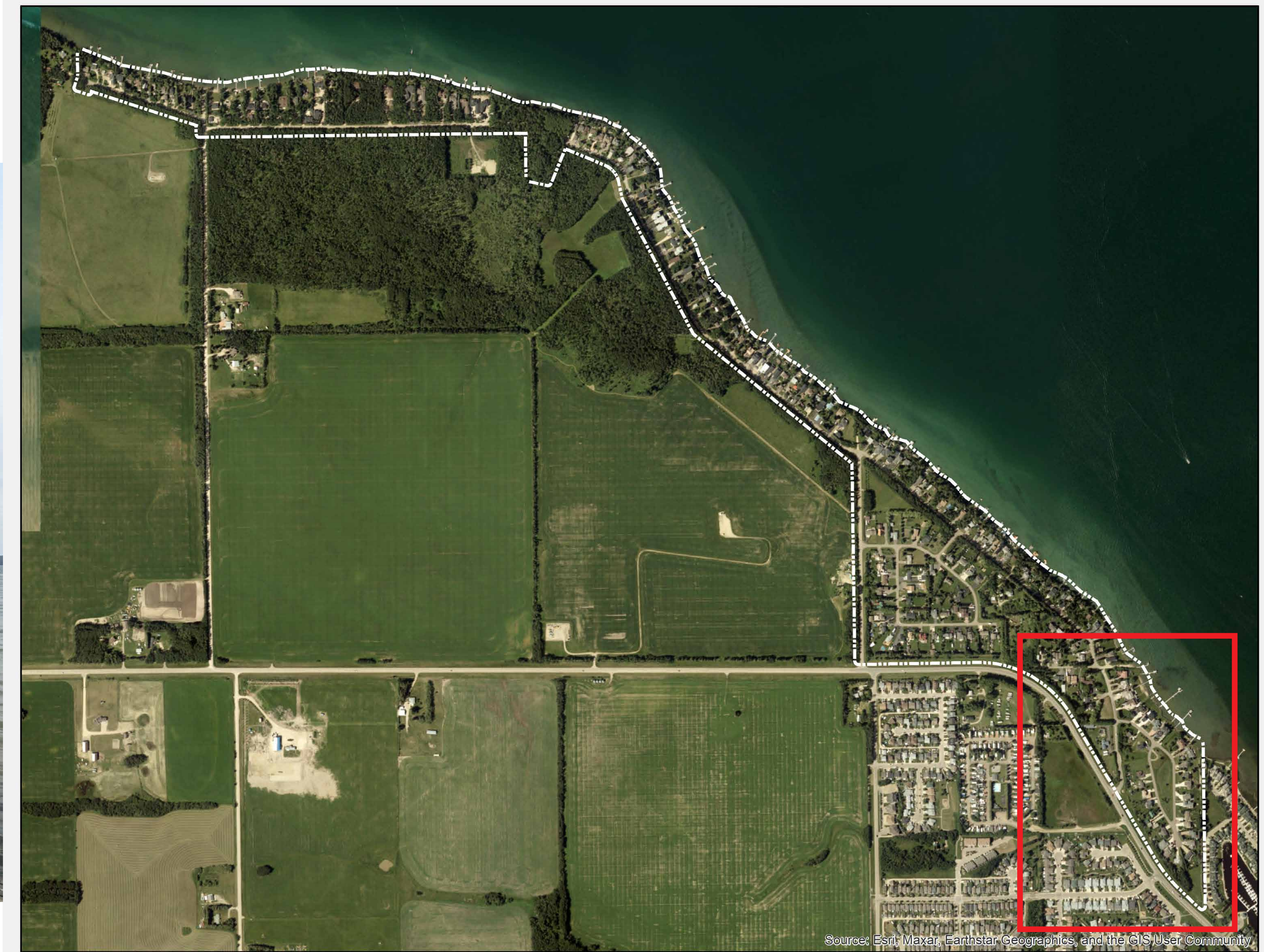
Rustic Crescent



OS21 - MR, looking south



OS21 - ER, looking northwest



Source: Esri, Maxar, Earthstar Geographics, and the GIS User Community



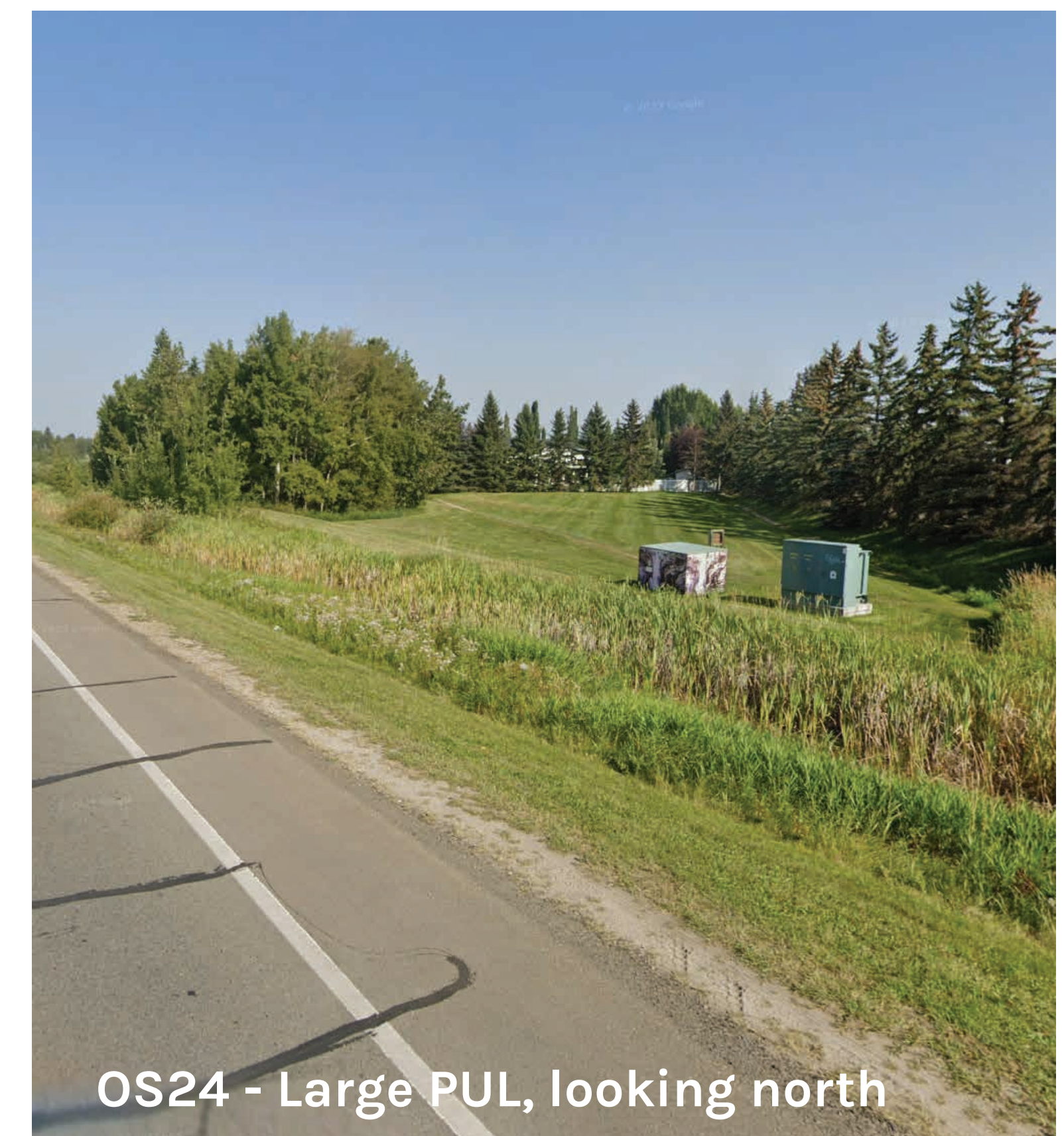
OS19 - looking east



OS23 - Open space, looking north



OS24 - Small PUL, looking west



OS24 - Large PUL, looking north